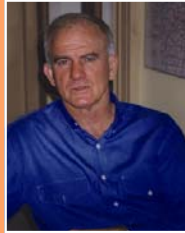




Members and Supporters newsletter

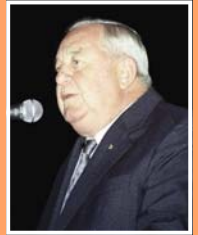


We take this opportunity to express our sincere appreciation to Education Queensland, The Department of Communities through the Blue Print for the Bush program and the Department of Local Government for their continuing, outstanding support for our Outback Education Centre "Wanpa-rda Matilda".



Bob Gleeson - CEO

Introducing this newsletter to you is one of our highly valued founding members - Senator Claire Moore, who has been a Senator for Queensland since 2002, and has been actively involved with the Australian Workers Heritage Centre since its inception in 1991.



Harry Hauenschield, AO

Claire has also worked hard in broadening awareness of the important work carried out by Australia's biggest classroom - the Outback Education Centre "Wanpa-rda Matilda", located within the Workers Heritage Centre.

"Wanpa-rda Matilda" Outback Education Centre

A message from Senator Claire Moore



There is a lot of Australia - and Queensland - "Out the Back" and yet comparatively few Australians have ventured beyond our coastal fringes.

Queensland's Central West has a fascinating and unique history. Many of the great watersheds of Australian history occurred there and as a consequence, they have had a profound influence in helping form our nation.

The unique Outback Education

Centre "Wanpa-rda Matilda" provides an exciting first class educational and tourist experience of the rich heritage of the region for residents and visitors alike.

The centre has exciting plans for 2008, and this newsletter provides the perfect opportunity to remind our supporters of the wonderful resource offered by the centre.

In 1997 a unique partnership was formed between Education Queensland and the Australian Workers Heritage Centre to develop a residential facility and supporting educational material to enable young students to discover the unique history and heritage of our great nation and to learn through interactive and positive experiences

rather than just from text books alone.

This first class excursion facility has already given thousands of young students the chance to explore and experience this remarkable part of Australia's outback.

The AWHC is one of many tourist spots in the region that provides unique educational opportunities for visiting groups during their stay at Wanpa-rda.

Within the AWHC's museum style complex, visitors can journey through time and experience a vital part of our nation's history and culture.

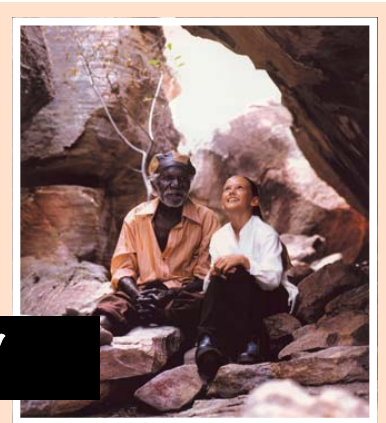
The museum captures the pulse of the nation's working life, honouring workers from all walks of life, capturing their spirit as well as retelling the story of their struggles and determination as they built a nation and inspired the quality of life and working conditions that we take for granted today.

Visitors can discover, for example, how a one-teacher school operated in the early

1900s, or they can experience the thrill of early governance by holding their own debates in the recreated Legislative Assembly.

Wanpa-rda Matilda provides the base from which students can explore a host of other educational sites of this truly unique region, where a growing tourist industry pays tribute to our unique history and culture. Such attractions in the region include the Blackall Woolscour, Australian Stockman's Hall of Fame, QANTAS Founders Museum and the Waltzing Matilda Centre.

Visiting students have the opportunity to become ambassadors for the region, and I would encourage people from all walks of life to take the opportunity to experience all that the Outback has to offer.



Australia's biggest classroom!

A message from

brooke miller

My name is **Brooke Miller** and I am the Co-ordinator of the Wanpa-rda Matilda Outback Education Centre situated on the grounds of the Australian Workers Heritage Centre.

A little history - I went to school in Barcaldine from Year 4 - 12 where I held many leadership positions, before attending the University of Qld - Gatton, where I studied Bachelor Business - Hospitality Management, before moving home to Barcaldine. I worked as a teacher-aid at the Barcaldine State School for 2 years before moving to Rockhampton to study a Bachelor Education-Primary. Since graduating I have worked at the Barcaldine SS and Central West schools in numerous positions such as Primary, Learning

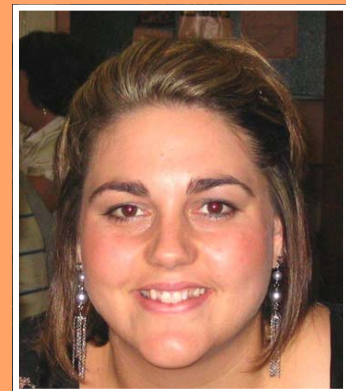
Support and Home Economics / Hospitality Teacher.

As Co-ordinator I am excited to be given the opportunity to work in such a unique establishment. As a 'near' local I believe in the goals and the mission of the Wanpa-rda Matilda Outback Education Centre,

"To share with students, teachers, schools and the wider community the uniqueness of Queensland's Outback region by providing quality life and educational experiences."

Using my experience and knowledge I have gained throughout my education and teaching and living in the central west for over 20 years, I aim to continue to promote

the many positive attributes of the Wanpa-rda Matilda Centre and outback Queensland. Through sharing the privileges of living in the Outback, with students from afar, we set the platform for not only a variety of educational outcomes but the future of Queensland's Outback Tourism Industry. I look forward to sharing our adventures, and offering to you all a valuable geographical area in which to pursue the history of Queensland and the development of the Australian identity!



What? Where? Why?

**WANPA-RDA MATILDA OUTBACK EDUCATION CENTRE
BARCALDINE QUEENSLAND**

Sharing with students, teachers, schools and communities the uniqueness of the Central West.

Wanpa-rda comes from the Wangkanguru people of the Birdsville district and means "to carry". Matilda comes from the Banjo Paterson song "Waltzing Matilda" and refers to bedroll or swag. So Wanpa-rda means to "carry your swag".

The first of its kind in Queensland, the Centre is located in the picturesque grounds of the Australian Workers Heritage Centre and has been specifically designed to accommodate the needs of school children and their carers.

Services and facilities include:-

- Air conditioned dormitory styled accommodation
- Excellent kitchen and dining facilities. (Self catering or full

- catering can be arranged if required)
- Undercover outdoor recreation and BBQ facilities
- Access to the Workers Heritage Centre grounds featuring picnic and also BBQ facilities on the banks of the bore-fed billabong
- An on-site Education Officer providing full planning support and assistance with flexibility in designing an itinerary, bookings, catering and local tours to suit individual requirements
- A fully kitted camping trailer allows for up to 50 students to go bush overnight
- Curriculum packages designed to maximize and enhance the student's outback experience
- Centrally located in the Longreach Education District

Visiting Wanpa-rda Centre is doing school camps and excursions the easy way. The

entire itinerary each experience educational and fun filled from breakfast to supper can be organised and booked to offer what we consider a most cost effective and convenient way for students to experience

*Adventure Packages to Australia's
Biggest Classroom and Provide
Memories to Last a Lifetime!*

The itineraries for each school varies depending on numbers, budget and curriculum needs. Time is taken to individually tailor a package to suit the schools needs.

Consider the value of what the Wanpa-rda Centre can offer in terms of the overall educational benefits and subsequent long term benefits such an experience will provide to students.

It Takes a Whole Community to Educate a Child!

OUTBACK SURVIVOR



1 Challenge - Water Survivor

How would you find water if you were stranded in the outback? In this challenge students will need to find and collect water in the bush. They will have to identify natural springs, dig native wells or collect water bush style. They can even travel out to properties and see how the pioneers did it using windmills and bore drains. But once they've found this water, how

will they know it's safe to drink? Students will test water from different sites around the area to determine which is the best to drink. Which group will be the most resourceful? Which group will die of thirst?

The winners of this challenge will not only survive....they will be the first to jump in!



Challenge - First Aid Survivor

What would you do if you were bitten by a deadly snake? Or if your mate broke their leg while out mustering? In this challenge the students will need to administer basic

first aid - bush style!

The winners of this challenge will not only survive....but make it home first!

2

How will your students tell their Outback survivor stories? The challenge is for students to explore the many different ways of making meaning of their experiences while in the bush and recording them to share with others. Students will explore a variety of mediums which can be used to record stories:

Dance and Drama
Songs and Poetry
Paintings and Written Word
and of course,
Technology - Videos,
Photographs & Presentations

The winner of this challenge will not only survive...but have a great record of all they have done while at the Wanpa-rda Matilda Outback Education Centre.

4 Challenge - Survivor Stories

3

Challenge - Shelter, Food & Fire Survivor

How will your group survive the Outback elements? The first part of this challenge is to plan, and construct a shelter out bush.

Leading up to this, students will look at traditional shelters and see how they did it in the past. Then they are on their own. With limited materials the students will have to make their own shelters and while days in the Outback

get mighty hot, the desert nights get mighty cold. Students will need to build a fire and take part in some old-style camp cooking! What about other food? Students will have to identify edible plants and learn how to track if they are going to fill their bellies!

The winners of this challenge will not only survive...but be the first to get their tucker that night!

In 2008, Wanpa-rda Matilda is looking to the future with its exciting new 'Outback Survivor' program. The new program, derived from the Survivor TV series is based around an Outback theme. In groups, students have to challenge the elements and develop real solutions in order to 'survive'.

The education program is aligned with Queensland curriculum, covering key learning areas such as Studies of Society and Environment, Science, Home Economics, Art, Drama, English and Technology.

Take up the challenge....

A message from robin rayner

Principal - Barcaldine State School

As a new Principal to the district I was aware of Wanpa-rda as an education resource but it is only since I have been involved in the working party that I have realized the full potential of this excellent facility. I have been honoured to be working with such a dynamic and strategic group of educators and community people to enhance the vision for Wanpa-rda Matilda in the years ahead.

The picture I now have of Wanpa-rda is that it is a centre which will work closely with Education Queensland and local businesses and organisations to provide quality education experiences for local, state, Australian and overseas visiting students. The theme of Outback Survival is highly relevant both in a curriculum sense, in terms of attractiveness to young people and in terms of global and environmental sustainability.

The programs offered provide core learning as well as extension in the curriculum areas of Geography, History, Art, Environmental Studies, Agriculture, Science, Cultural Studies and Tourism Studies. Across these subject areas the focus on environmental habitats, ecosystems, water and river systems is highly topical and important in developing skills and understandings for students and teachers about our fragile environments. The ecosystems and habitats available are in many cases quite unique for example - the Desert Uplands, Artesian Basin and Desert Channels; and in others the concepts are highly transferable for example - Ecotourism, Agricultural systems etc.

For students from urban areas the centre provides a bush experience in a safe and challenging environment. They are able to experience the curriculum in unique settings with authentic guides and relate their learning to global concepts which will apply to continued study in their own schools and to later life experiences when visiting the bush or travelling in environmentally sensitive areas. The stories, the real life activities and the extension of skills and knowledge provide high quality learning for students of all ages. I believe Wanpa-rda Matilda is an experience that will remain with them for their lives.

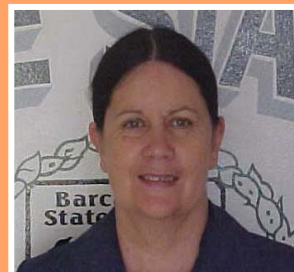
For many tourists and potential tourists amongst our students there is a need for understanding of safety in travel, especially in rural and remote or isolated places, and this experience can be learned from the stories of the original Indigenous people, the early explorers, agriculturalists and workers as well as by participation in the activities. This is further enhanced by easy access to the Australian Workers Heritage Centre with its wealth of Australian history. Students will gain knowledge and skills in bush first aid, emergency systems and ways of keeping safe when travelling in the bush. These lessons are obviously applicable to other areas of travel in remote parts of the world and support our global citizens to protect our environments and keep themselves safe.

The economical accommodation provides opportunity for short and long term programs within school budgets. The location on the main

Entering a new era of Outback Education

tourist routes of Rockhampton to Longreach - Winton - Mt Isa or Roma - Longreach - Winton - Mt Isa allows access to other experiences along the way such as the gemfields, Charleville Cosmos Centre, Longreach Stockman's Hall of Fame, Winton Waltzing Matilda Centre, Mt Isa Mines and other attractions for longer tours. Rail and flight access also enables economical access to the facility and its central location is an excellent base for exploration of Queensland's outback. In all respects this centre has wonderful potential to provide quality curriculum and outback experiences, and to grow in programs and access for schools and organisations.

I am very pleased that as the local state school Barcaldine State School is working closely with the Wanpa-rda Matilda Centre and that there is such quality community involvement.



The Australian Workers Heritage Centre

94 Ash Street,
Barcaldine Qld 4725
T (07) 4651 2422 F (07) 4651 1570

HEAD OFFICE:

Bob Gleeson - CEO M: 0419 18 1940

Level 1, Harris Terrace,
46 George Street, Brisbane
PO Box 12324, George St Qld 4003
T (07) 3 211 1205 F (07) 3 211 1207
E: bobgleeson@westnet.com.au
W: www.australianworkersheritagecentre.com.au

Wanpa-rda Matilda Outback Education Centre

Co-ordinator - Brooke Miller

Cnr Ash & Willow Streets, Barcaldine
PO Box 26, Barcaldine Qld 4725

T (07) 4651 2530 F (07) 4651 2531
E: the.principal@wanpardaeec.eq.edu.au
W: www.wanpardaeec.eq.edu.au